

SURVIVOR

The best review game in the world.

- What structure is formed when sperm fertilizes an egg?

- Over time, the inner mass of the _____ will develop into the organism itself, while the outer mass will develop into the _____.

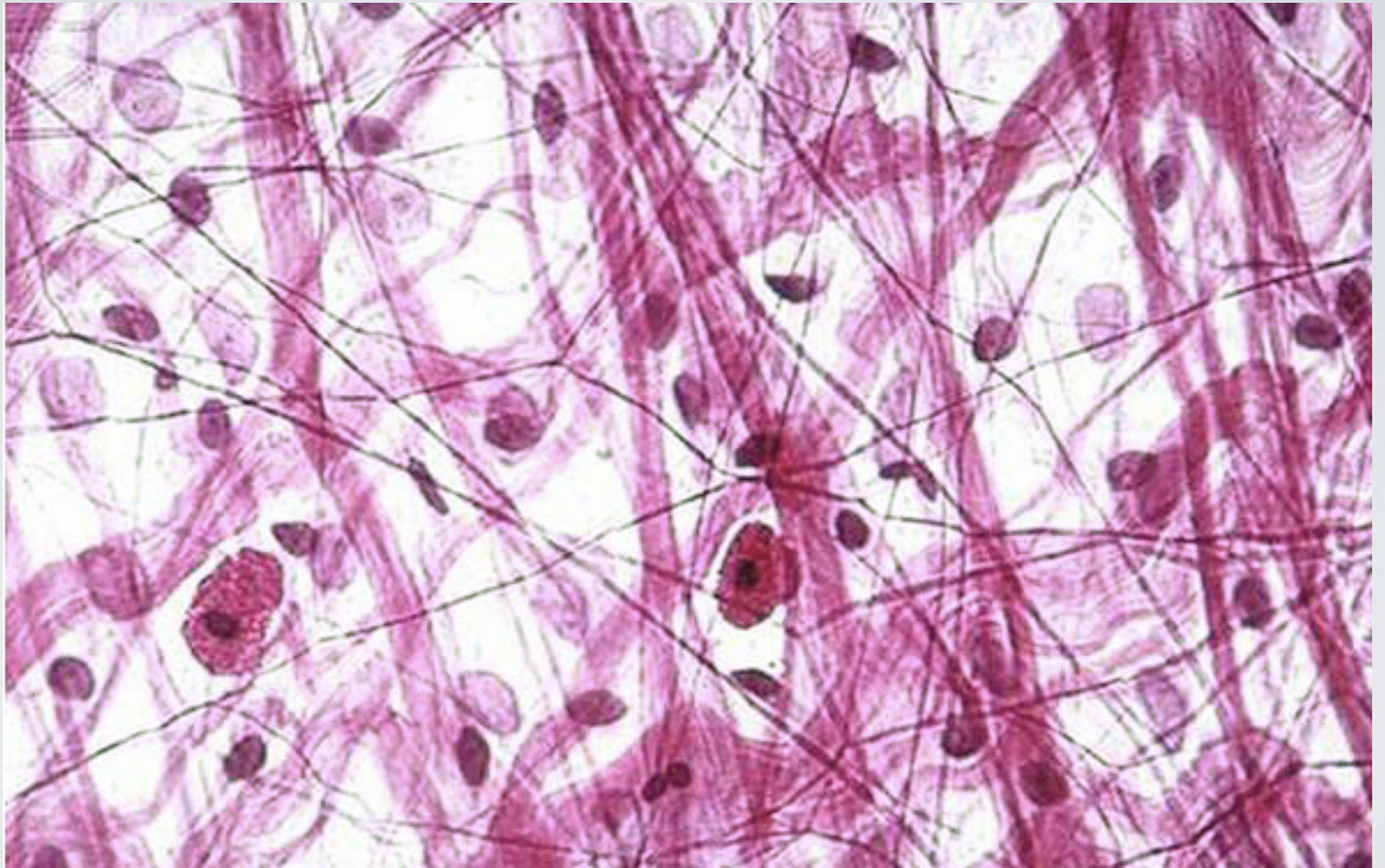
- What type of stem cell can give rise to any and all human cells?

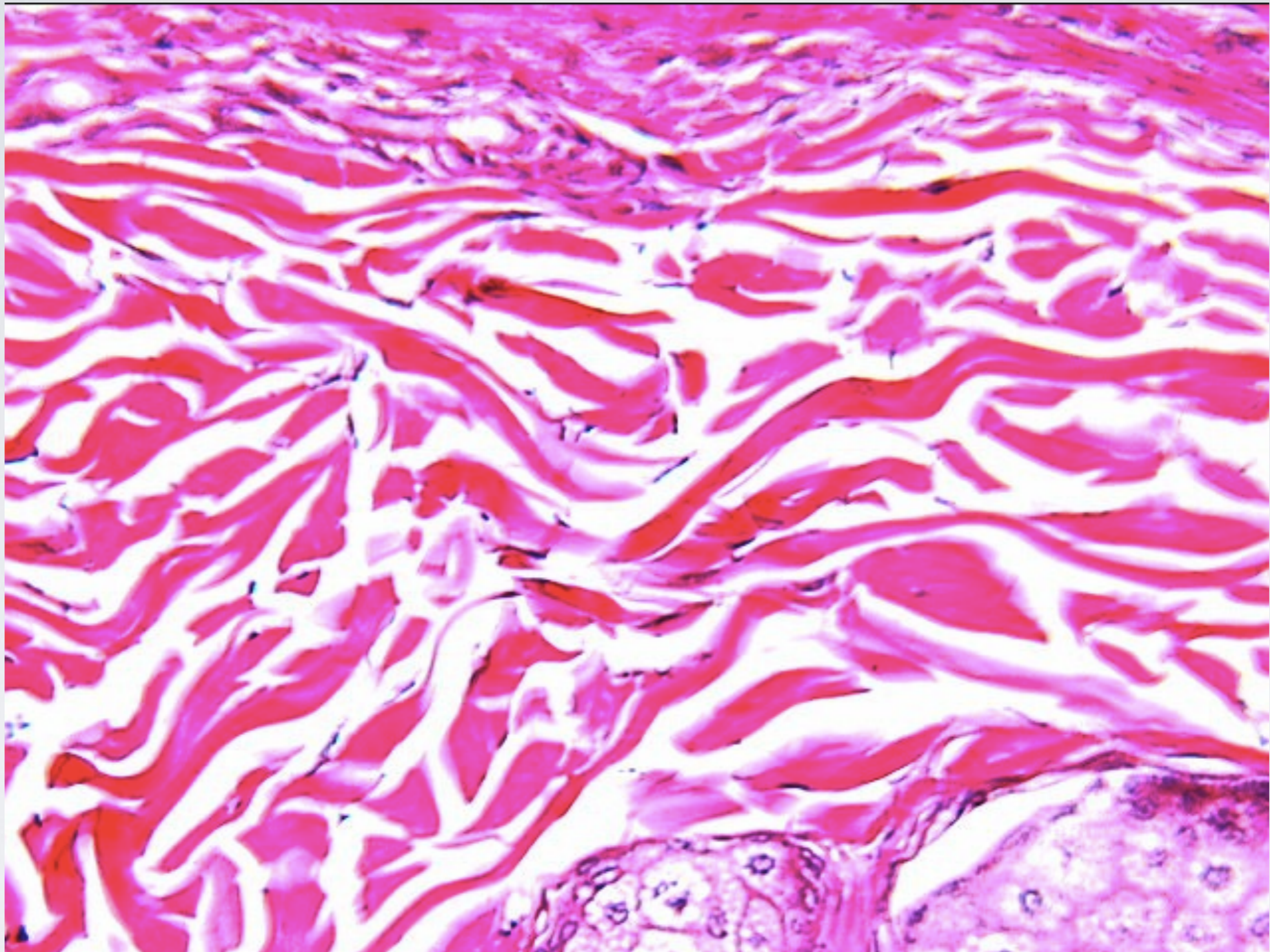
- What type of stem cell can form nearly any human tissue, but not all?

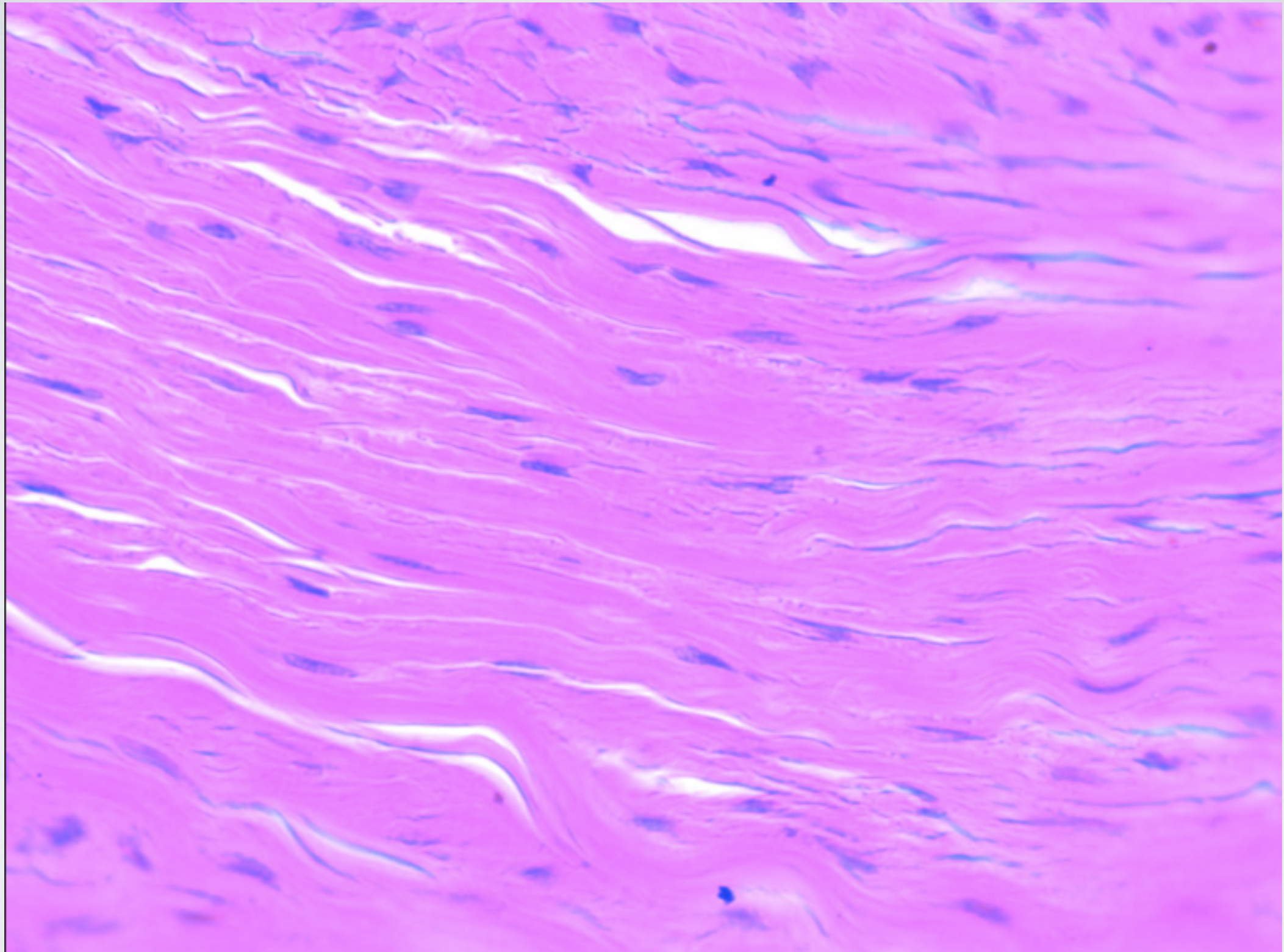
- What is an iPS cell?
 - What does iPS stand for?
 - What does that type of cell do?

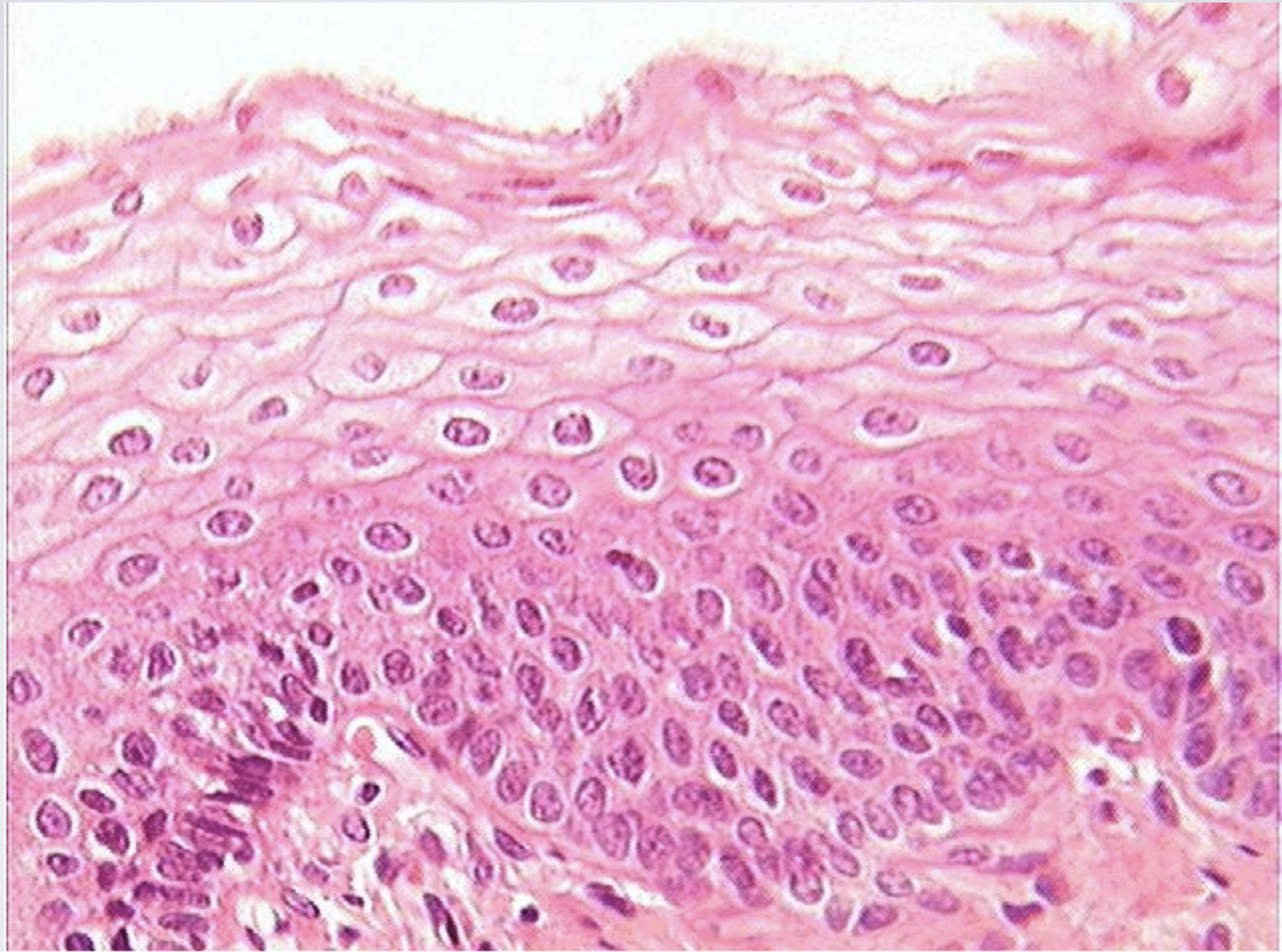
- What is a tissue?

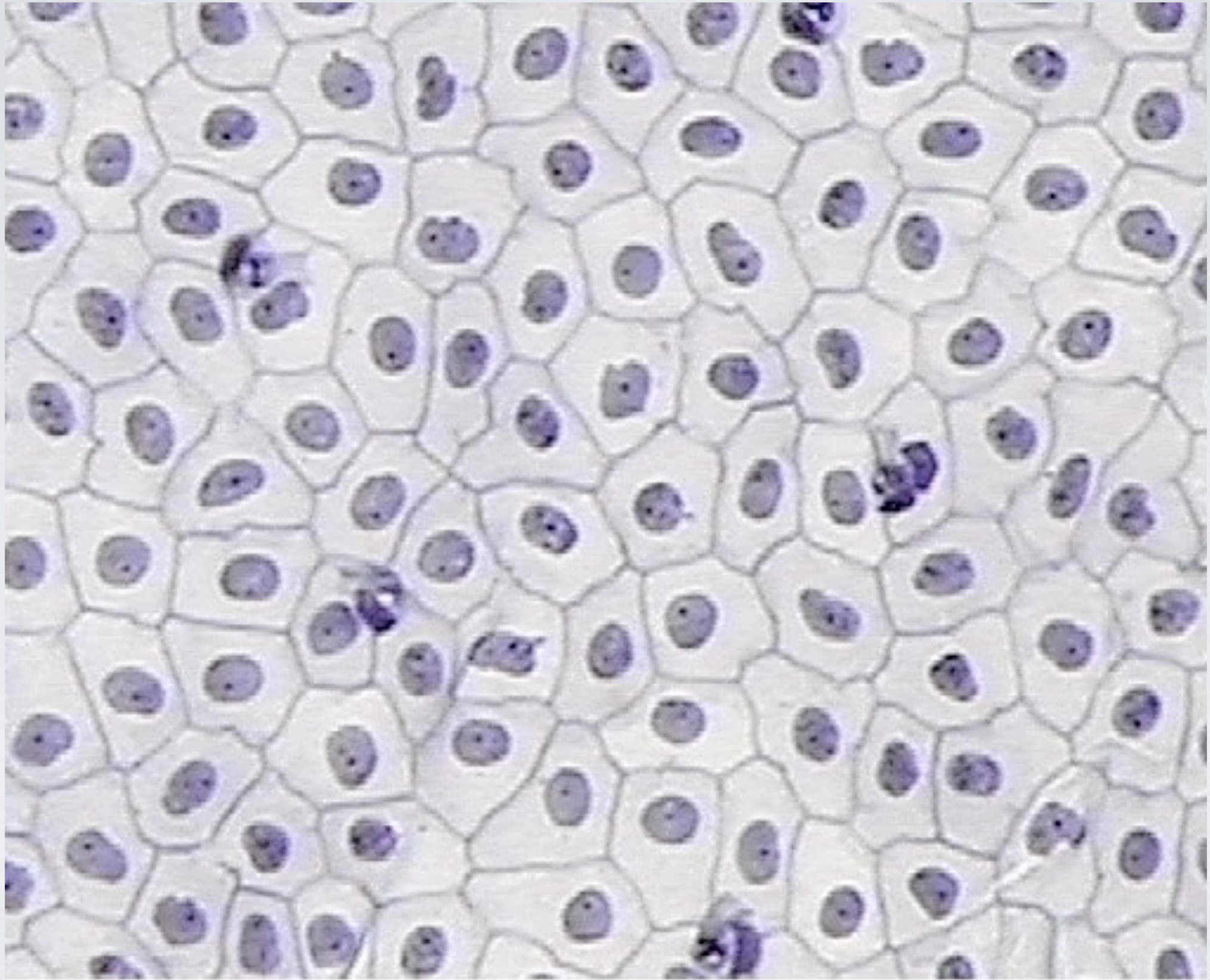
- Name and describe the two different surfaces of an epithelial tissue.

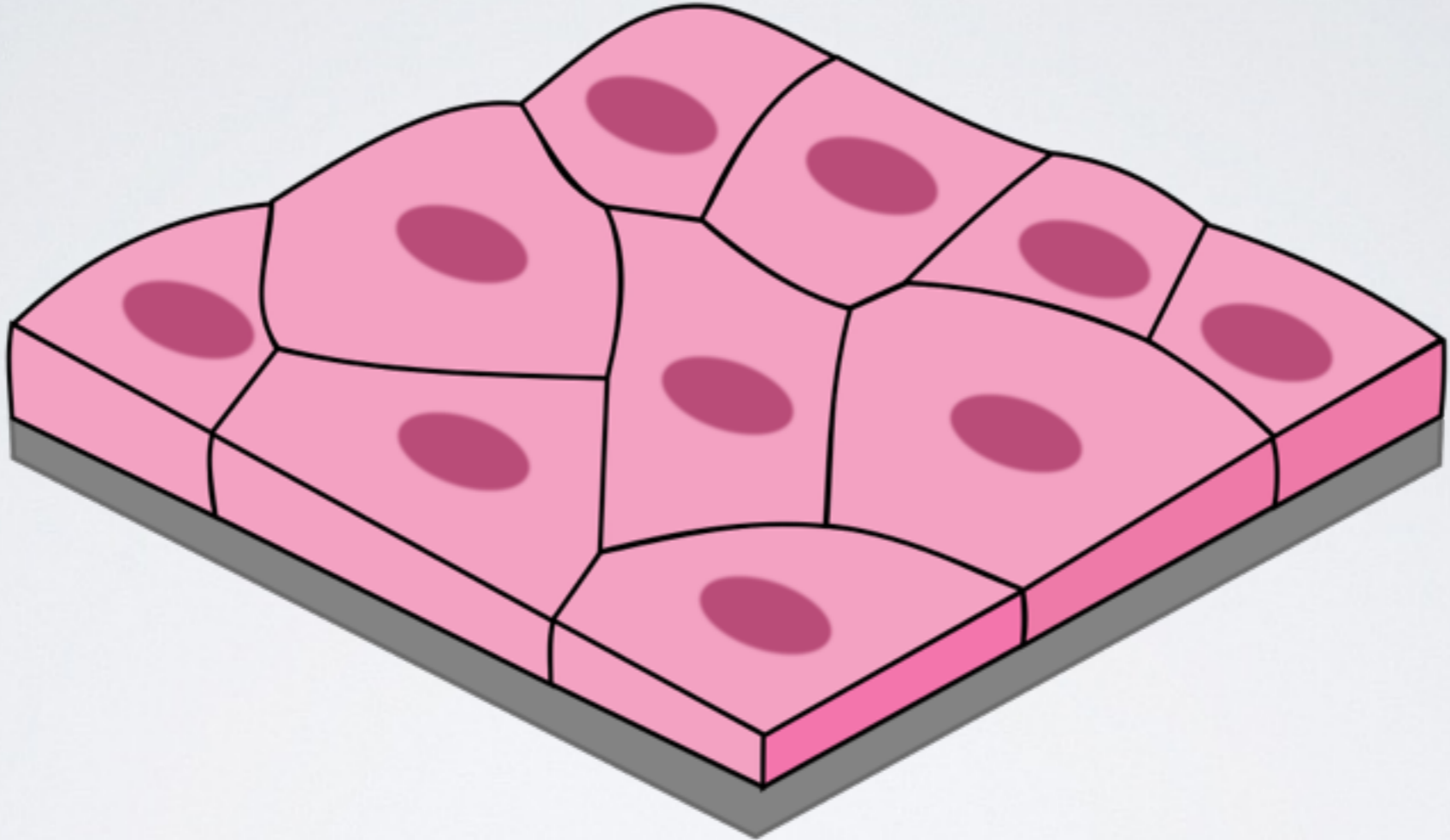


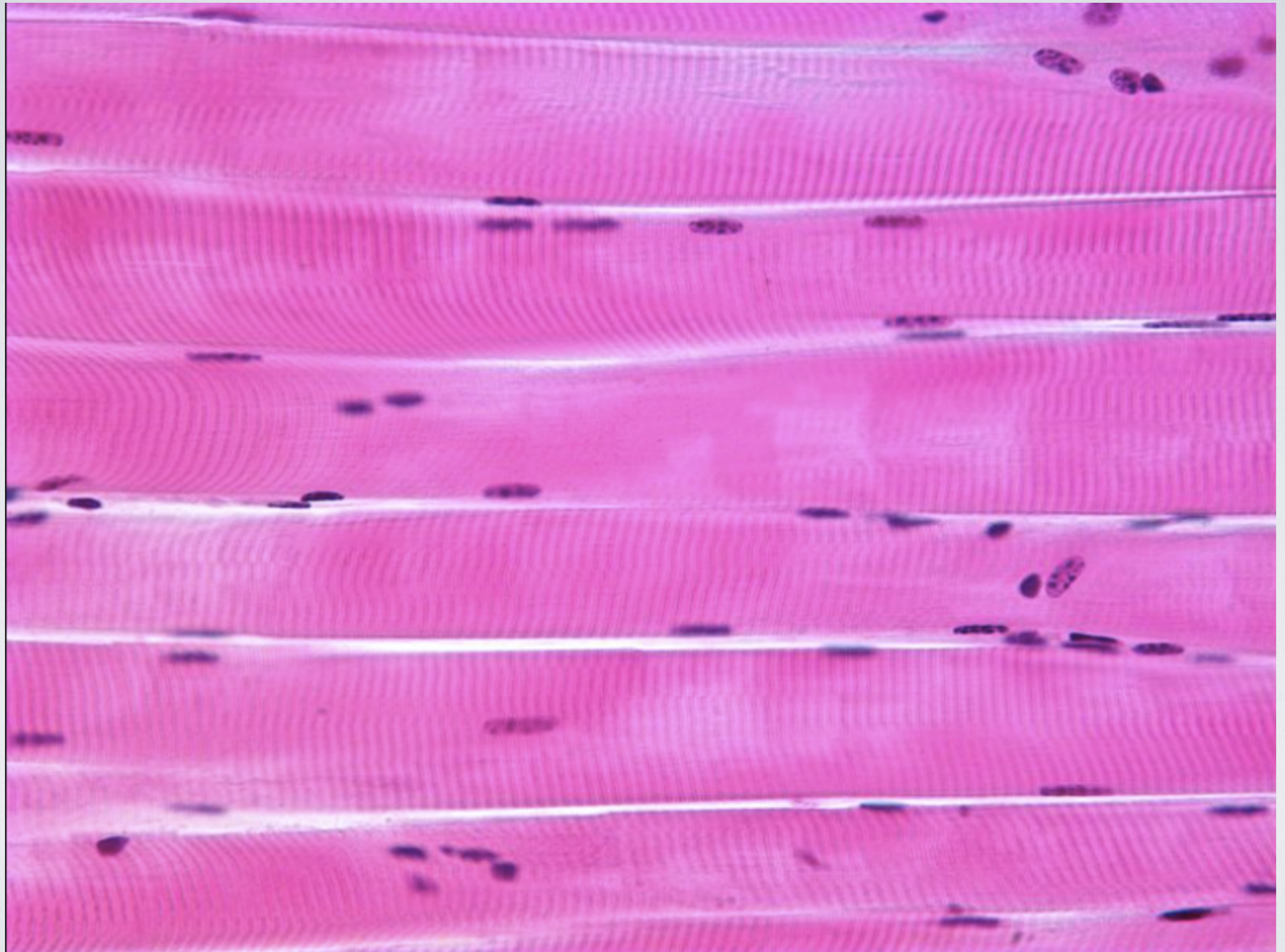


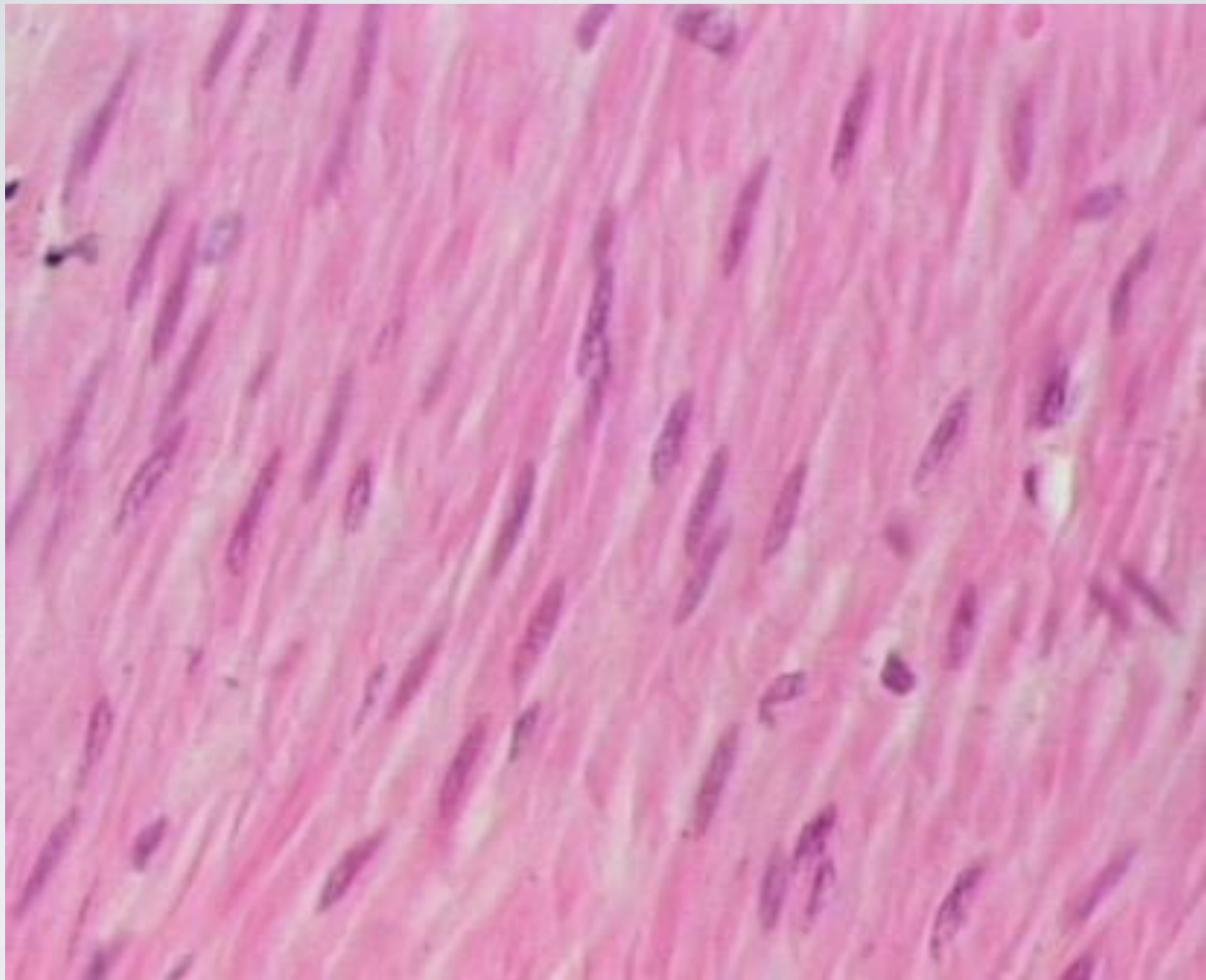


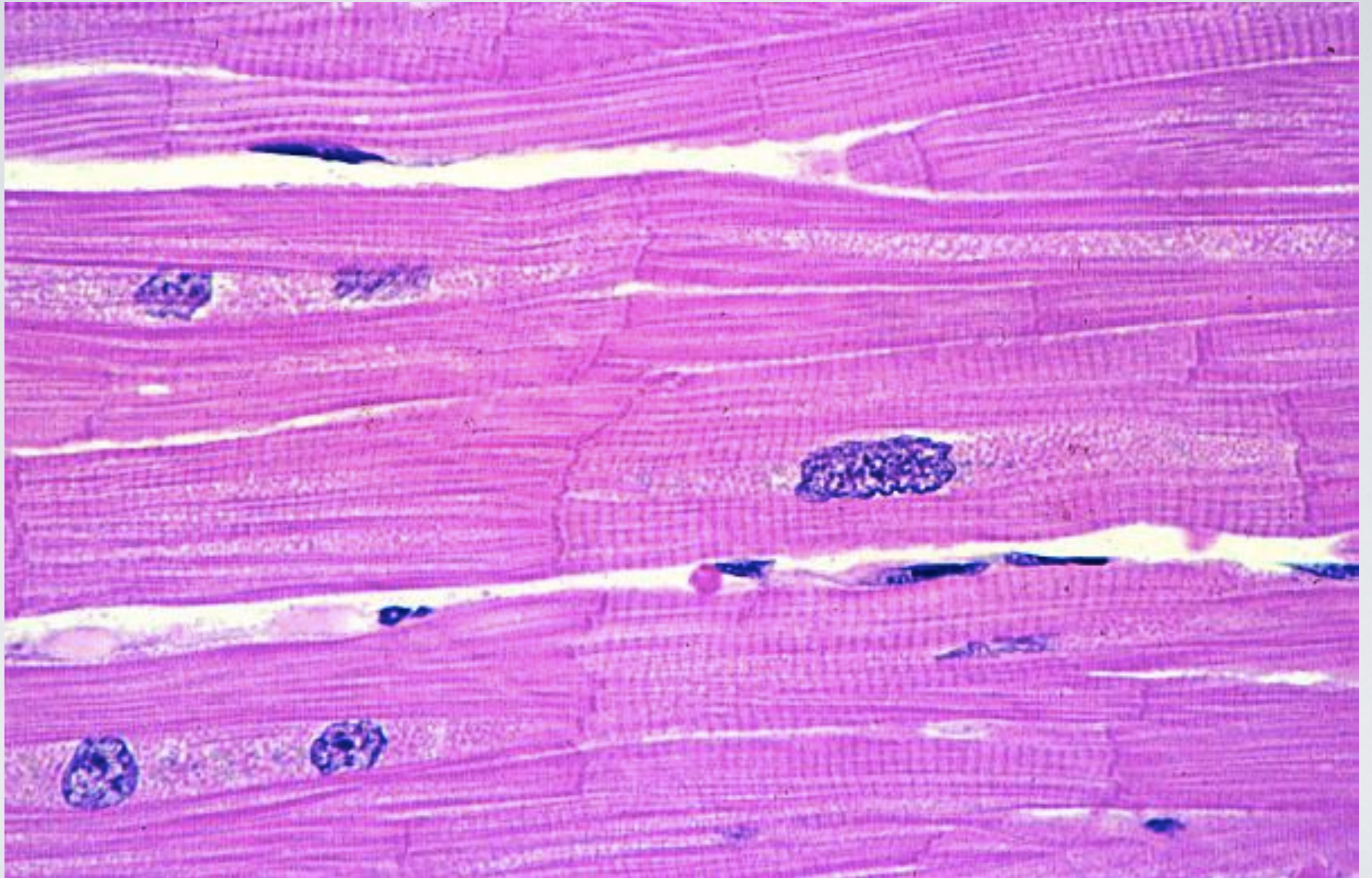


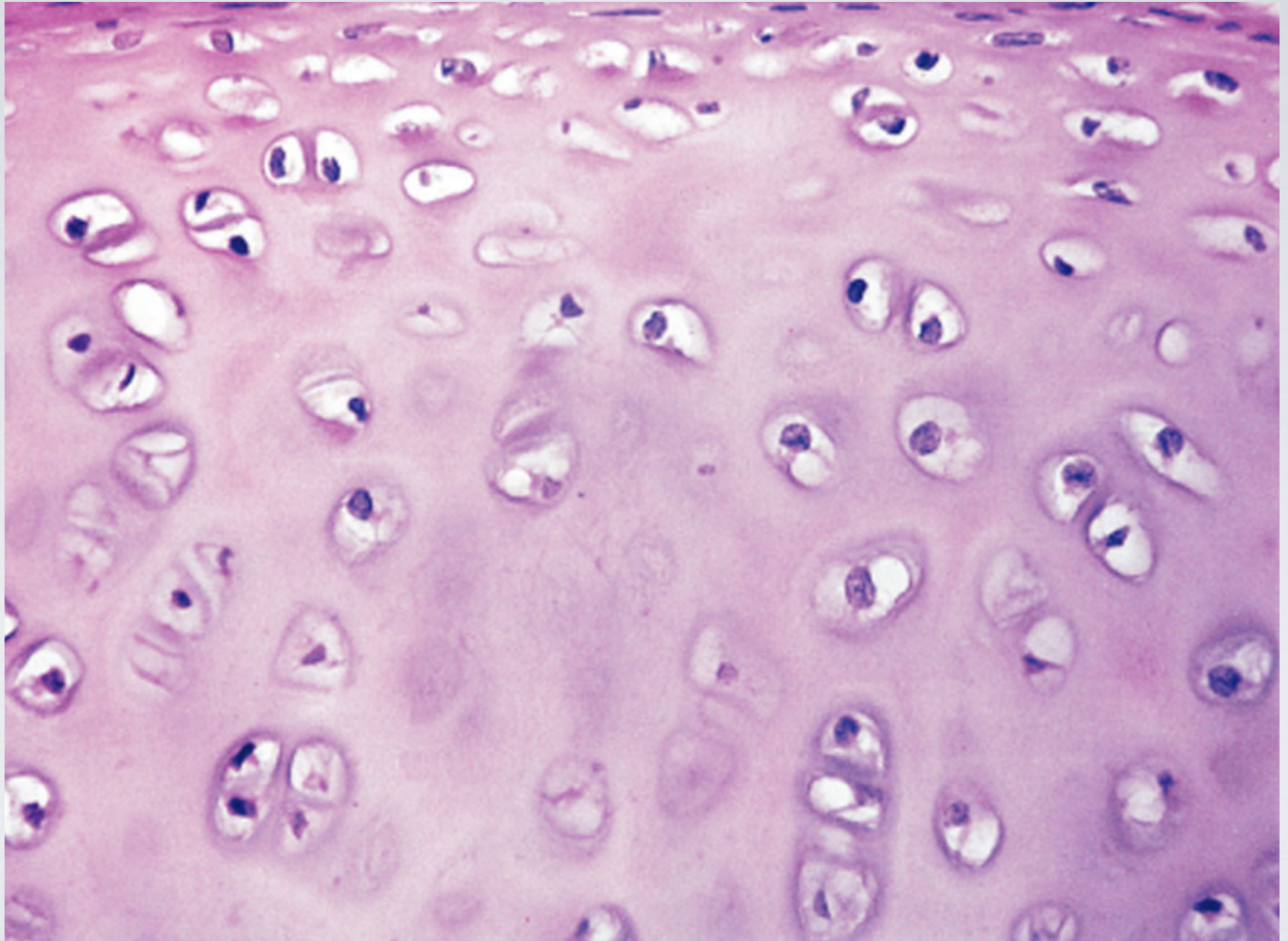


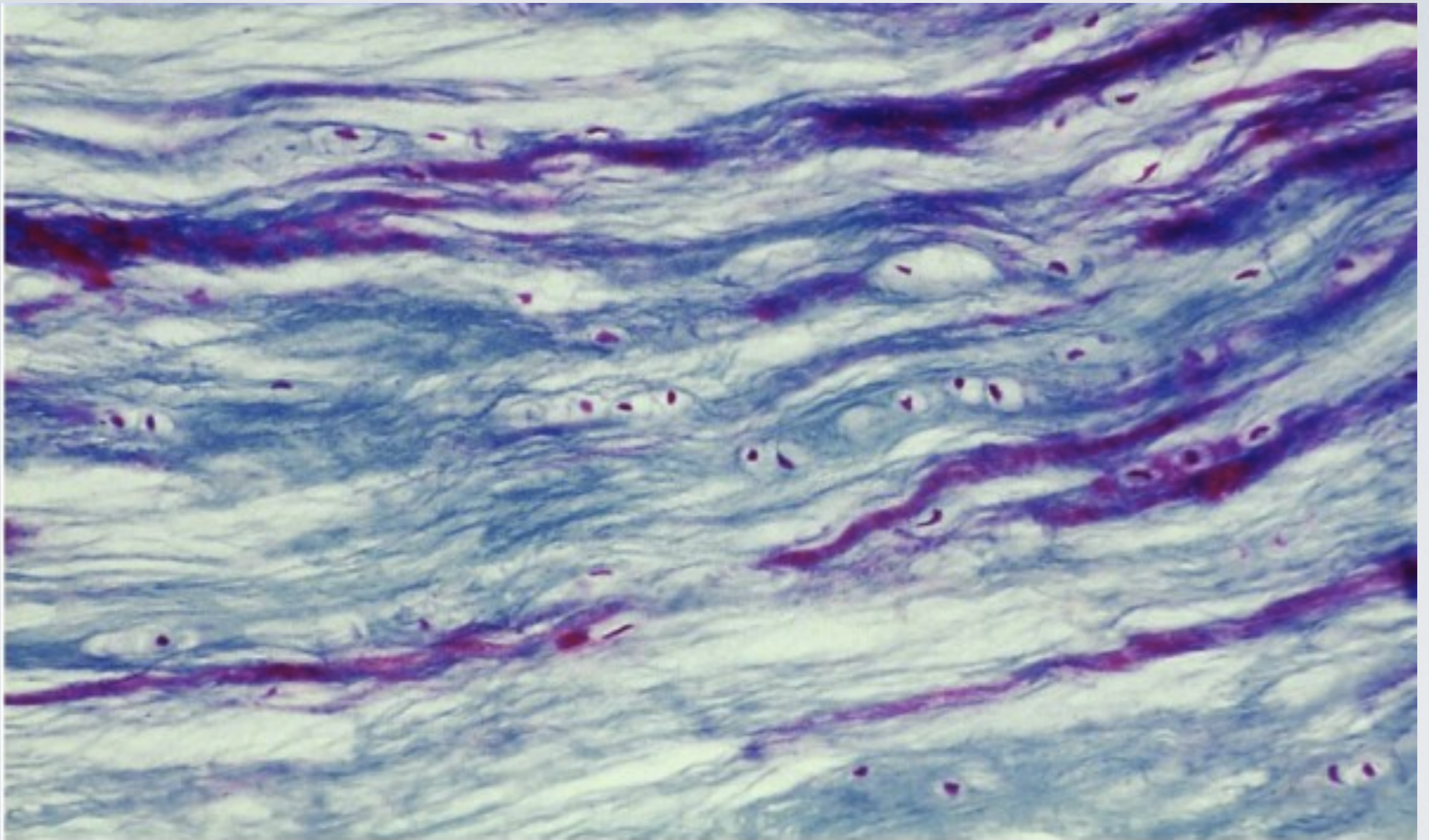












- What does it mean if something is 'avascular'?

- _____ glands secrete various substances into ducts or channels, which then transport the substances to a target location.

- _____ glands secrete substances directly into the blood stream. The circulatory system then transports the substances to a target located.

- Why does it take so long for damaged tendons, ligaments, and cartilage to heal?

- Name one of the two things that all connective tissue have in common.

- What is extra cellular matrix (ECM)?

- Name the 3 different types of protein fibers found in connective tissue.

- Which type of connective tissue acts as a glue and holds organs in place?

- Which type of connective tissue provides cushioning for organs and serves as an insulator?

- Name one location where dense connective tissue can be found within the body.

- What structure attaches muscle to bone?

- What structure crosses over joints and connects bone to bone?

- What type of connective tissue contains very fine collagen fibers *and* can be found in the lymphatic system (lymph nodes, bone marrow, spleen)?

- What is a chondrocyte?

- What type of cartilage makes up a large portion of the fetal skeleton?

- Elastic cartilage is found in the _____.

- _____ cartilage is found in between vertebral discs, the meniscus of the knee, and pubic area.

- Another word for osseous tissue is...

- Bone cells can also be called...

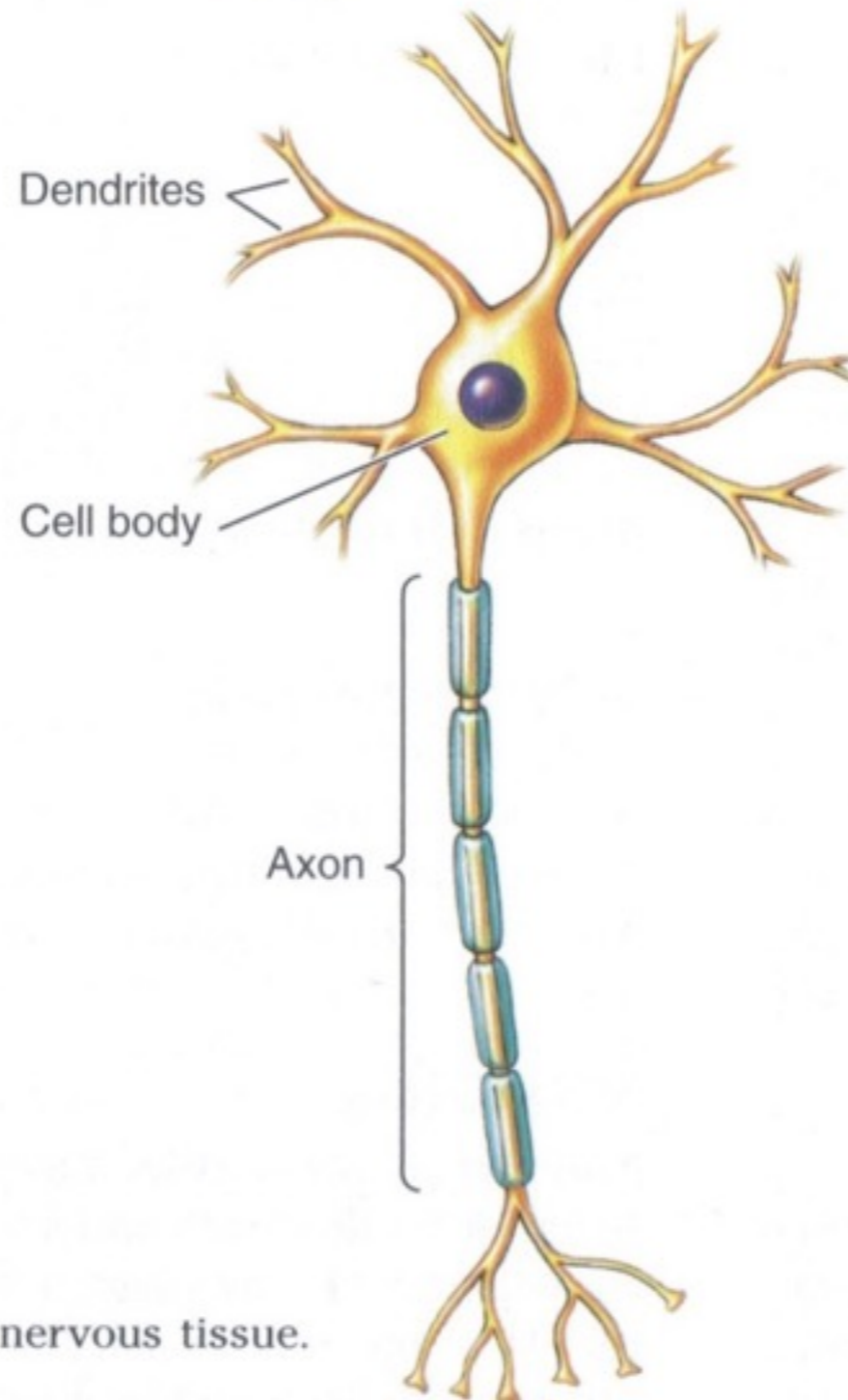
- Name the condition that causes bones to become very brittle and prone to breakage due to demineralization.

- _____ encourages calcium deposition in bones.

- Name the fibrous protein associated with blood clotting.

- Draw and label the 3 main parts of a neuron.

A Neuron



es of nervous tissue.
ia.

- Name the type of cell that provides support for neurons, or essentially holds the neurons together.

- What are the two types of muscle that function *involuntarily*?

- What is the function of intercalated disks?

- Regeneration and fibrosis are the two ways in which...

- What does it mean to say that a tissue has undergone regeneration?

- What does it mean to say that a tissue has undergone fibrosis?

- Name one type of tissue that must be replaced by fibrosis when damaged.

- _____ are thin sheets of tissue that line body cavities, cover surfaces, and surround organs.

- The _____ membrane protects the body from potentially harmful substances, as well as drying out.

- Mucous membranes line all body cavities that are _____ to the outside of the body.

- _____ membranes line ventral body cavities that are NOT OPEN to the outside of the body.
- They stay lubricated by...

- Name 2 of the 3 types of serous membranes and their location within the body.